

Motic®
MORE THAN MICROSCOPY

MoticEasyScanPro

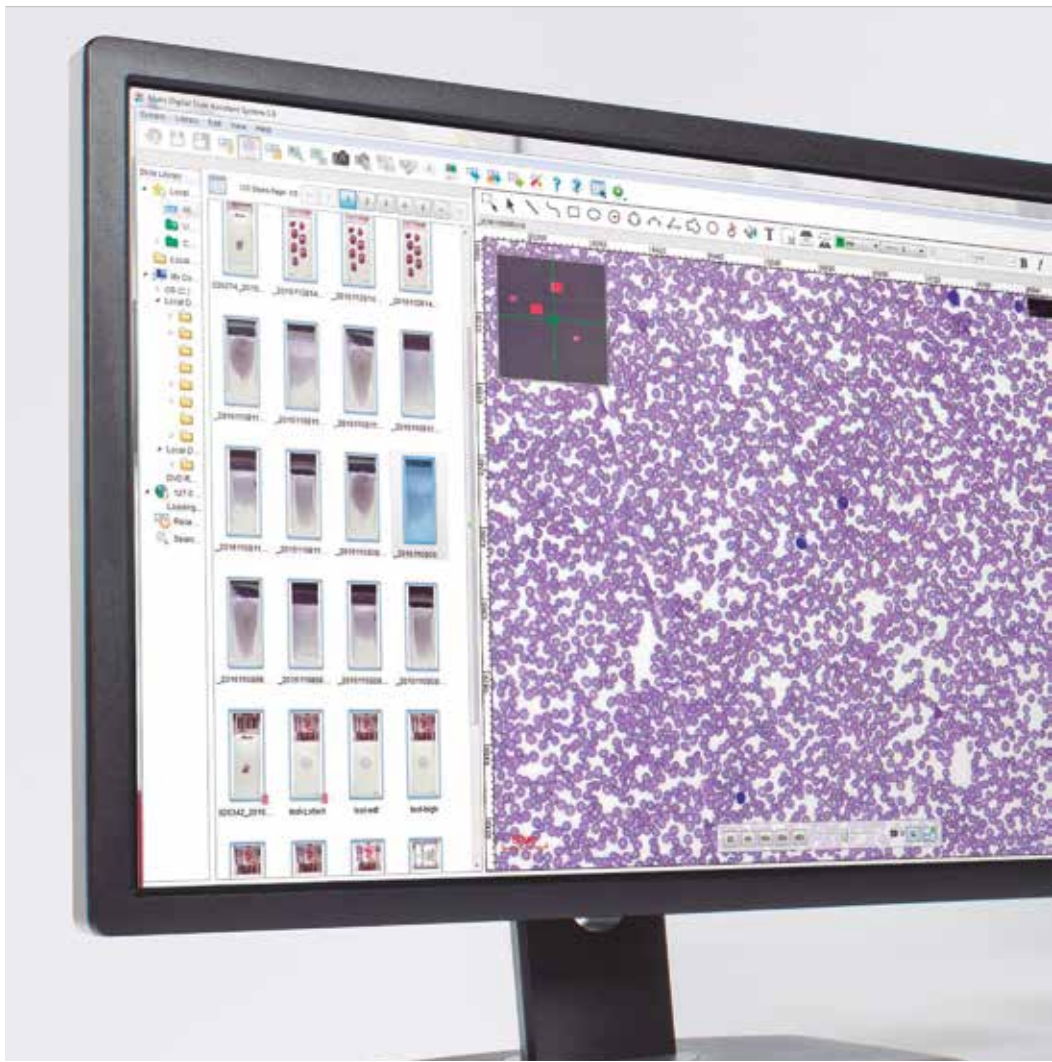
MoticEasyScanPro is an efficient scanning instrument for producing and sharing high-quality digital images. Simple and easy, the implemented software allows untrained users a quick and reliable data acquisition: one click starts a complete scanning process. This conversion of glass slide information into digital data embodies several advantages. Safe storage of fragile information, sharing of clinical expertise and worldwide networking.

By implementing an especially designed High NA Plan Apochromatic objective 20X/0.75, color fidelity and resolution power is driven to the maximum. The combination with a large 2/3" CCD sensor reduces the scanning time significantly by capturing a large area within a split second, at the same time allowing to display image detail information of a high power 40X lens.

www.moticeasyscan.com | www.moticeurope.com

THE PERFECT IMAGING RESOURCE
FOR HEALTHCARE, RESEARCH AND EDUCATION





MoticEasyScanPro TECHNICAL SPECIFICATIONS

Objective	Plan APOCHROMAT 20X/0.75
Scanning time	15x15mm approximately 3 minutes (40X magnification)
Focus	Real time autofocus device
Scanning camera	5 Mega (2/3" Sensor)
Macro Camera	3 Mega
Resolution	20X: 0.52µm/pixel; 40X: 0.26µm/pixel
Light source	10W LED (Lifetime: 25,000 Hours)
Slide capacity	6 slides Tray
One-click scanning mode	Normal (Real time autofocus) High precision (High precision autofocus) EDOF (Extended depth of field) Z-Stack (Three dimensional stack)
Slide dimensions	76 x 26mm
Slide tolerances (mm)	Length: +0/-1, Width: +0/-1
Computer	Intel Core (TM) I7-6700 Processor (8MB) 16GB Memory 2TB 7200rpm Disk DVD Recorder DisplayPort to DVI USB Mouse & Keyboard Windows 10 Professional 64bit
Monitor	HD LED Monitor 24"
Calibration slide	4Point calibration slide
Software included	DSAssistant and EasyScanner software (6 slides)

SCANNING YOUR SAMPLE

EasyScanner Software

Scan up to 6 slides in just one-click. Customized scanning modes may be chosen for the single slides within the slide carrier. The standard scanning settings are password protected and may be modified according to individual requirements.



WORKING WITH YOUR DIGITAL SLIDE

DSAssistant Software

Contains a Tab with the Digital slide library (thumbnails and basic image information), and the Tab for Slide Edition with several tools like image adjustment, annotations, measurements, encryption, image comparison, image export or conference tool for group discussions.

